

2014 RATE SCHEDULE

Check In after 2:00 PM Check Out by 10:00 AM	EXTRA LARGE MOTEL ROOM 2 Double beds or King Ocean/Promenade View	LARGE EFFICIENCY 2 Double Beds & Kitchen 1st or 2nd Floor	3RD FLOOR DELUXE ROOM 2 Double beds or King Ocean View	BREEZEWAY Standard King
April 1 - April 13	\$ 80	\$ 85	\$ 90	\$75
April 14 - May 22	\$ 90	\$ 95	\$ 105	\$85
May 23 - June 26	\$ 150	\$ 155	\$ 160	\$145
June 27 - July 10	\$ 210	\$ 255 <small>Rate includes 2 A & 2 C</small>	\$ 220	\$200
July 11 - Aug. 23	\$ 230	\$ 275 <small>Rate includes 2 A & 2 C</small>	\$ 240	\$220
Aug. 24 - Aug. 31	\$ 185	\$ 190	\$ 195	\$180
Sept. 1 - Sept. 13	\$ 160	\$ 165	\$ 170	\$155
Sept. 14 - Oct. 12	\$ 115	\$ 120	\$ 125	\$110
Oct. 13 - Dec. 30	\$ 99	\$ 105	\$ 110	\$89

Rates quoted for 1 or 2 persons except where noted. Additional Adults \$20.00, Child \$20.00. Weekends add \$20.00. Holidays & special events, call for rates. Cash, Travelers Check or Debit Card preferred.

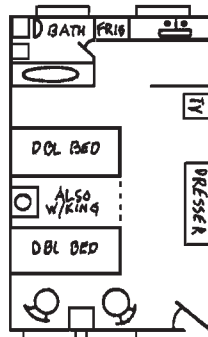
“Early Reservations Insure Choice Accommodations”

Amenities

- Daily Maid Service
- On-site Parking
- Swimming Pool
- Sundeck & Lounge Chairs
- Individual Room Air Conditioning & Heat
- Beach across the street with Direct Access
- Coffee Shop Next Door
- Tennis & Golf Nearby
- Cable Color TV
- FREE Wi-Fi Internet Access
- Hair Dryer
- Refrigerator
- Rooms are Non-smoking
- Courtesy Outdoor Shower
- Personalized and Friendly Service

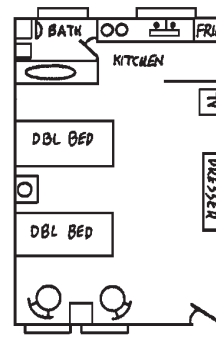
Extra Large Motel Room

w/ 2 Doubles
or StandardKing



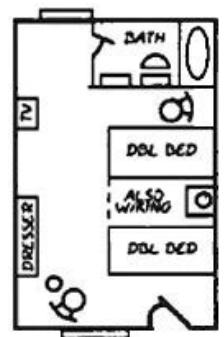
Efficiency

w/ 2 Doubles



3rd Floor Deluxe Room

w/ 2 Doubles or King



The Heritage Inn Motel is centrally located on the oceanfront and in the heart of the Cape May Historic District. We are only steps away from the beachfront promenade, fine restaurants, shopping and Victorian sightseeing.

Charming, turn-of-the century architecture... white, sandy beaches and peaceful blue tides... quaint shopping villages... historic trolley and walking tours, sidewalk cafes... the enchantment and romance of days gone by... these are just a few reasons to visit Cape May, New Jersey.

The Heritage Inn Motel is one more reason to stay. The charm of this Victorian Era Village is inherent at the Heritage Inn, where you will experience friendly hospitality and the home-like comfort of our beautifully appointed rooms, all just a breeze from the beach.

Characterized by its tranquil, family atmosphere, it's a short stroll to restaurants, shopping and touring opportunities. The Heritage Inn is touted as the Premier location on the beachfront.

Join us on Facebook

